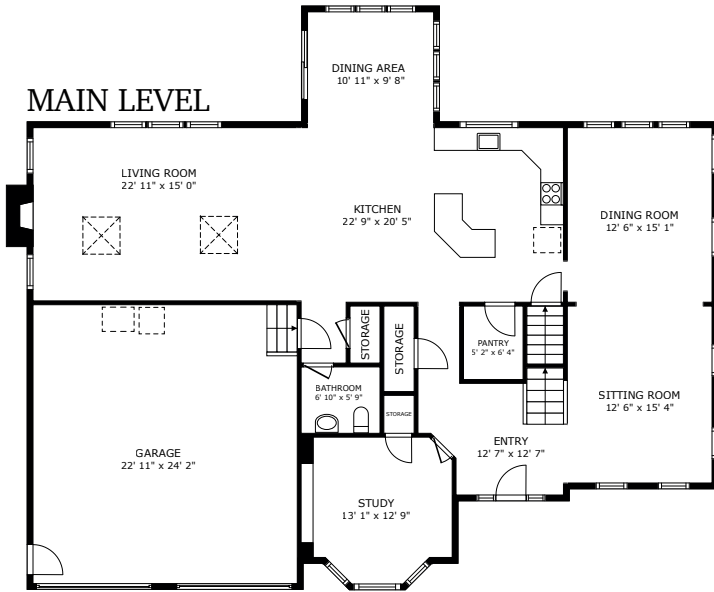
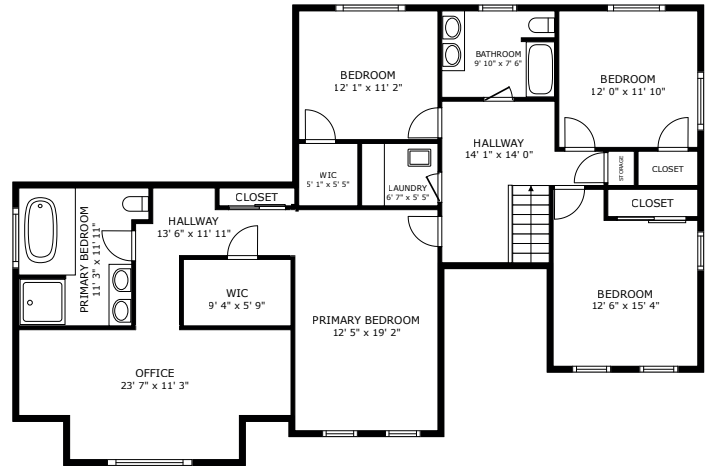


# 3 Blueberry Ct - Stow, MA

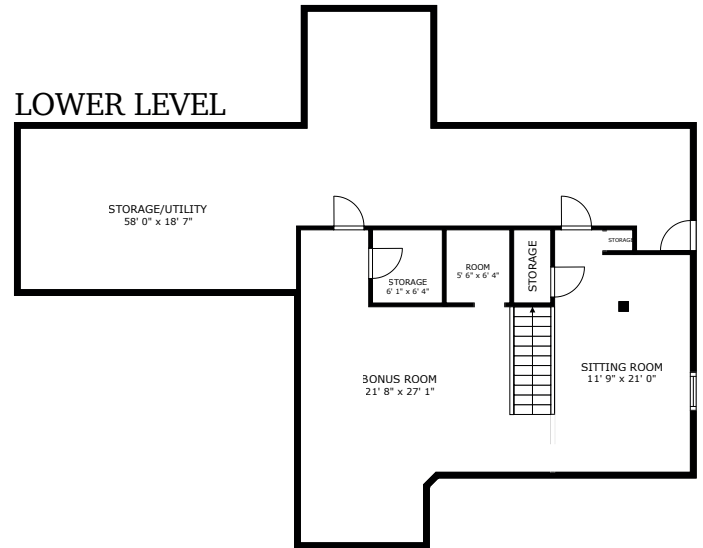
## MAIN LEVEL



## UPPER LEVEL



## LOWER LEVEL



GROSS INTERNAL AREA  
 LOWER LEVEL 434 sq.ft. MAIN LEVEL 1,678 sq.ft. UPPER LEVEL 1,576 sq.ft.  
 EXCLUDED AREAS : GARAGE 553 sq.ft. LOWER LEVEL: STOAGE/UTILITY 1,084 sq.ft.  
 TOTAL : 3,688 sq.ft.

SIZES AND DIMENSIONS ARE APPROXIMATE, ACTUAL MAY VARY.

**Fisher**  
 & Associates



"Making Clients for Life"

[www.KatiesHomeNews.com](http://www.KatiesHomeNews.com)

**Katie Fisher**  
 Fisher And Associates  
 978.660.4318

[Fisherteam76@gmail.com](mailto:Fisherteam76@gmail.com)

This floor plan is an approximation, and is intended for marketing purposes only. This information has been provided with the sellers permission. © 2024 Glasshouse Media Inc.