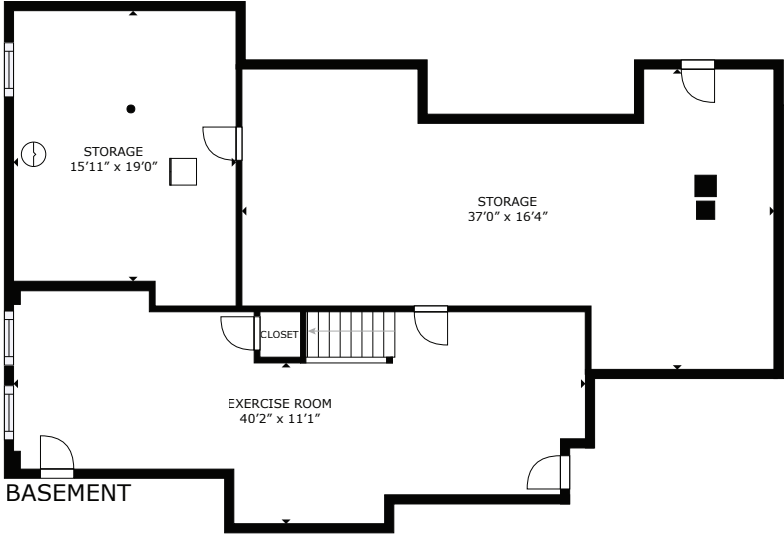
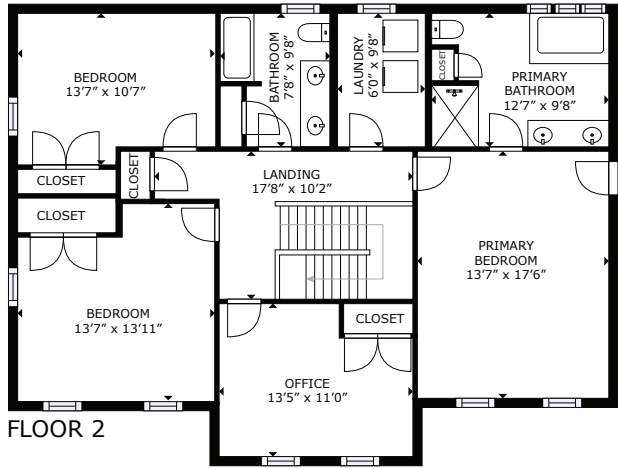
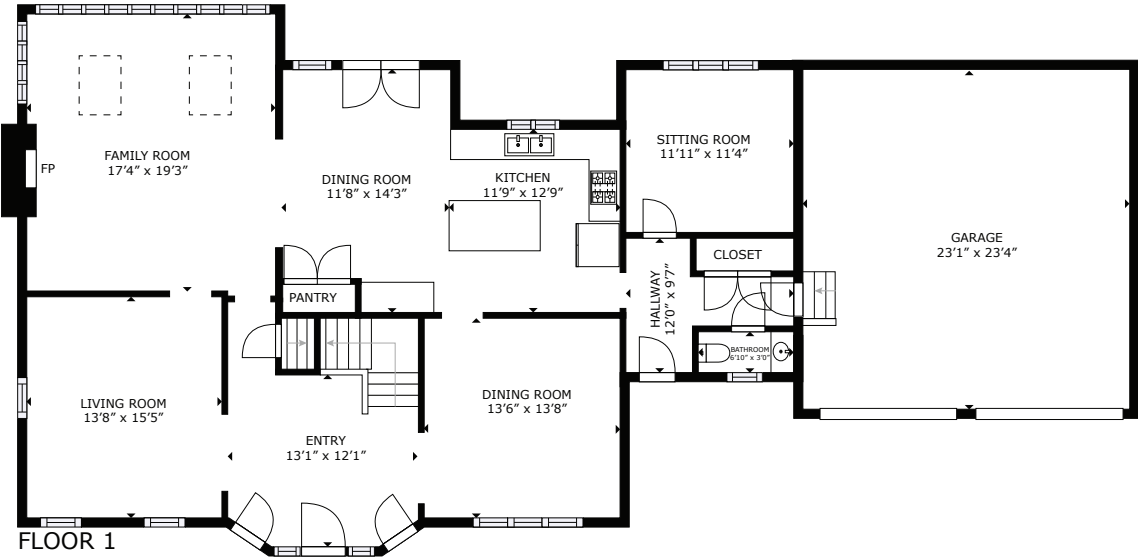


3 Birch Brush Rd - Shrewsbury, MA



GROSS INTERNAL AREA
 BASEMENT: 612 sq. ft, FLOOR 1: 1,248 sq. ft,
 FLOOR 2: 1,214 sq. ft
 EXCLUDED AREA: GARAGE: 556 sq. ft STORAGE: 893 sq.ft
 TOTAL: 3,074 sq. ft
 SIZES AND DIMENSIONS ARE APPROXIMATE, ACTUAL MAY VARY.

This floor plan is an approximation, and is intended for marketing purposes only. This information has been provided with the sellers permission. © 2024 Glasshouse Media Inc.