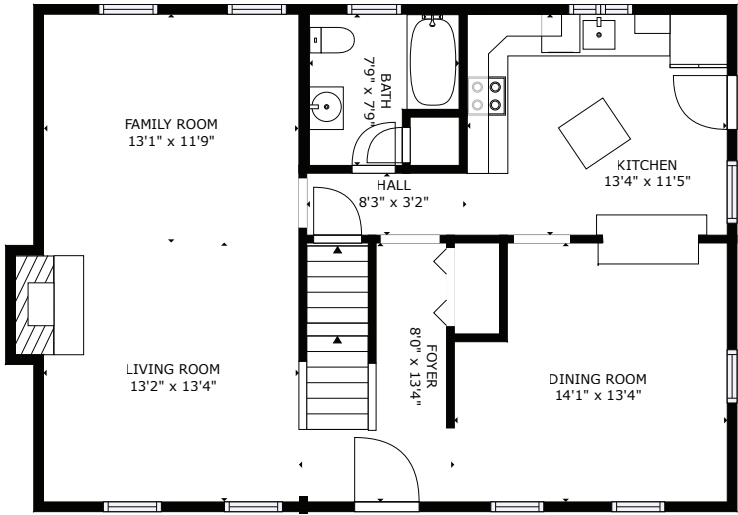
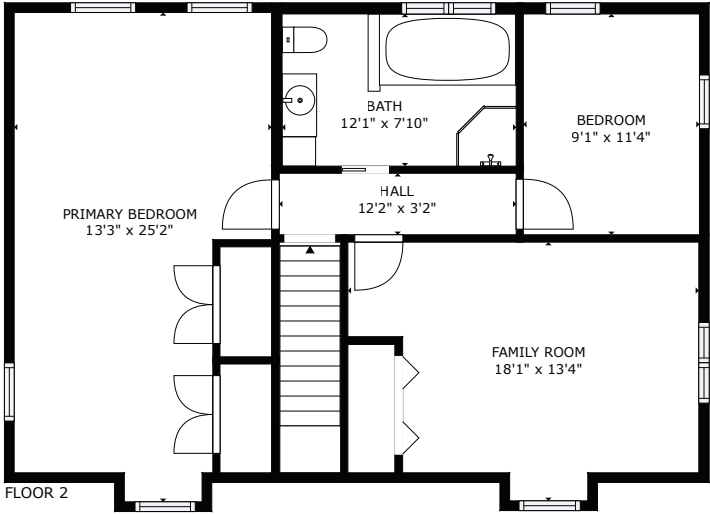


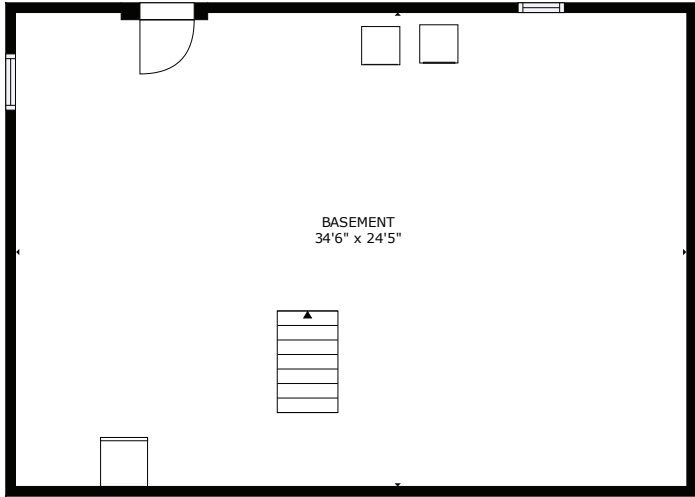
340 Mill Street - Mansfield, MA



FLOOR 1



FLOOR 2



BASEMENT

GROSS INTERNAL AREA
BASEMENT: 843 sq. ft, FLOOR 1: 892 sq. ft
FLOOR 2: 847 sq. ft
TOTAL: 2582 sq. ft

SIZES AND DIMENSIONS ARE APPROXIMATE, ACTUAL MAY VARY.

This floor plan is an approximation, and is intended for marketing purposes only. This information has been provided with the sellers permission. © 2023 Glasshouse Media Inc.