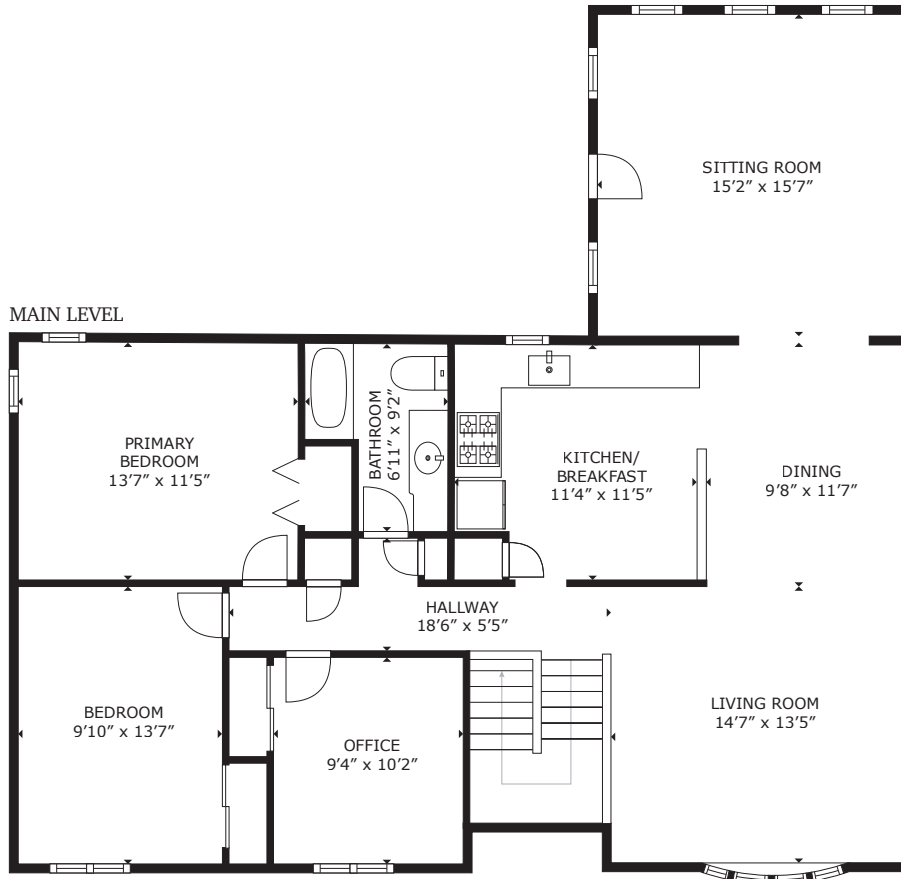
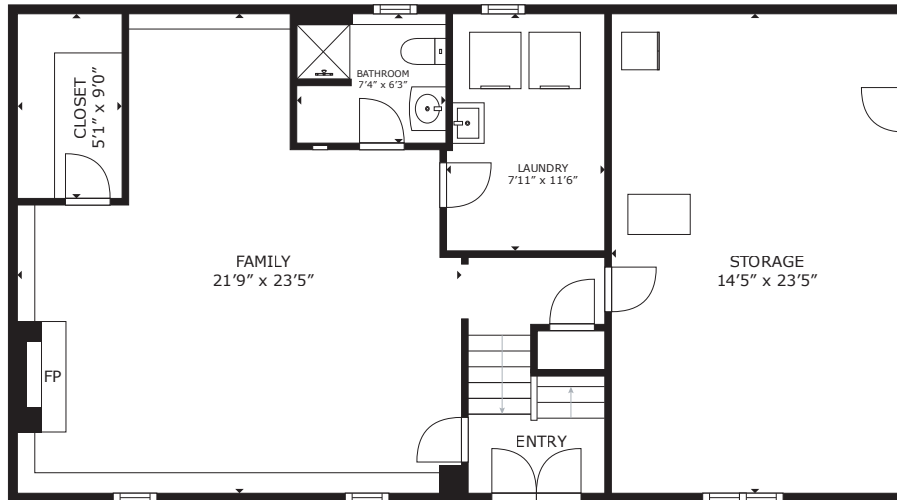


27 Phyllis Road - Raynham, MA



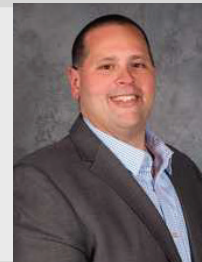
LOWER LEVEL



GROSS INTERNAL AREA
BASEMENT: 1,003 sq. ft, 1ST FLOOR: 1,315 sq. ft
TOTAL: 2,318 sq. ft



Glasshouse Media
www.glasshousemedia.com
877.741.5637



Jonathan Ashbridge
Keller Williams Realty
781.608.5007

ashbridgere@gmail.com