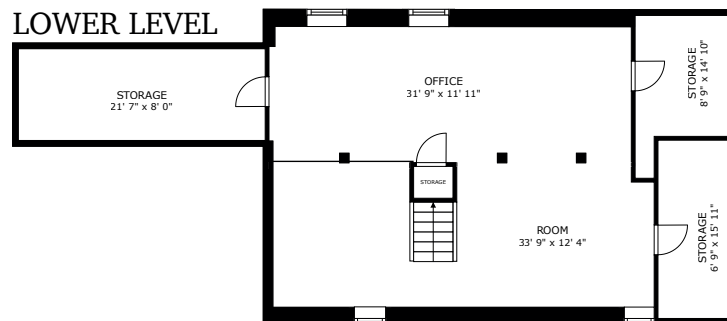
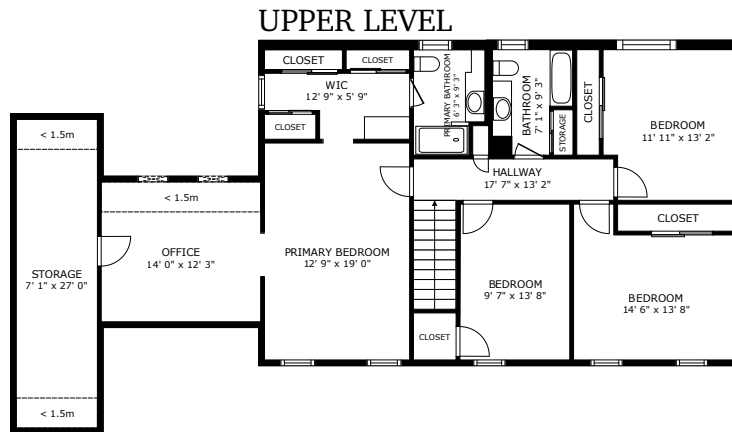
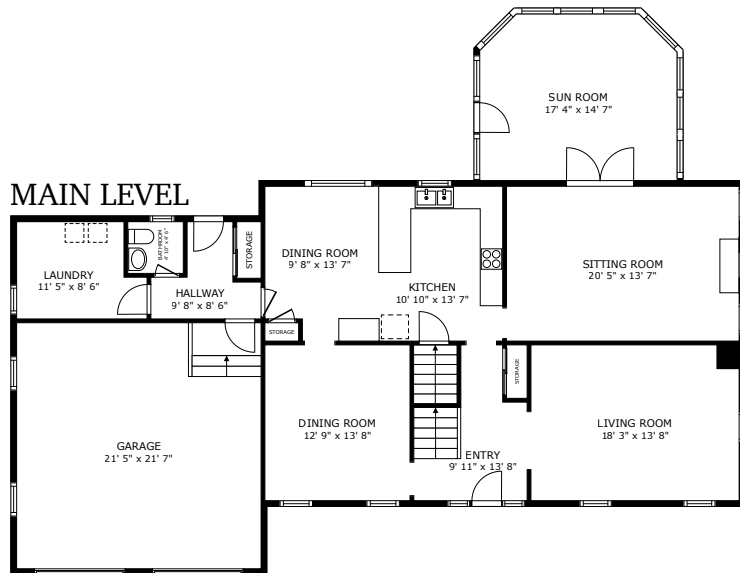


25 Maura Drive - Stow, MA



GROSS INTERNAL AREA
 LOWER LEVEL 799 sq.ft. MAIN LEVEL 1,592 sq.ft. UPPER LEVEL 1,425 sq.ft.
 EXCLUDED AREAS : GARAGE 461 sq.ft. LOWER LEVEL STORAGE: 403 sq.ft.
 TOTAL : 3,816 sq.ft.

SIZES AND DIMENSIONS ARE APPROXIMATE, ACTUAL MAY VARY.

Fisher
 & Associates



"Making Clients for Life"

www.KatiesHomeNews.com

Katie Fisher
 Fisher And Associates
 978.660.4318

Fisherteam76@gmail.com

This floor plan is an approximation, and is intended for marketing purposes only. This information has been provided with the sellers permission. © 2024 Glasshouse Media Inc.