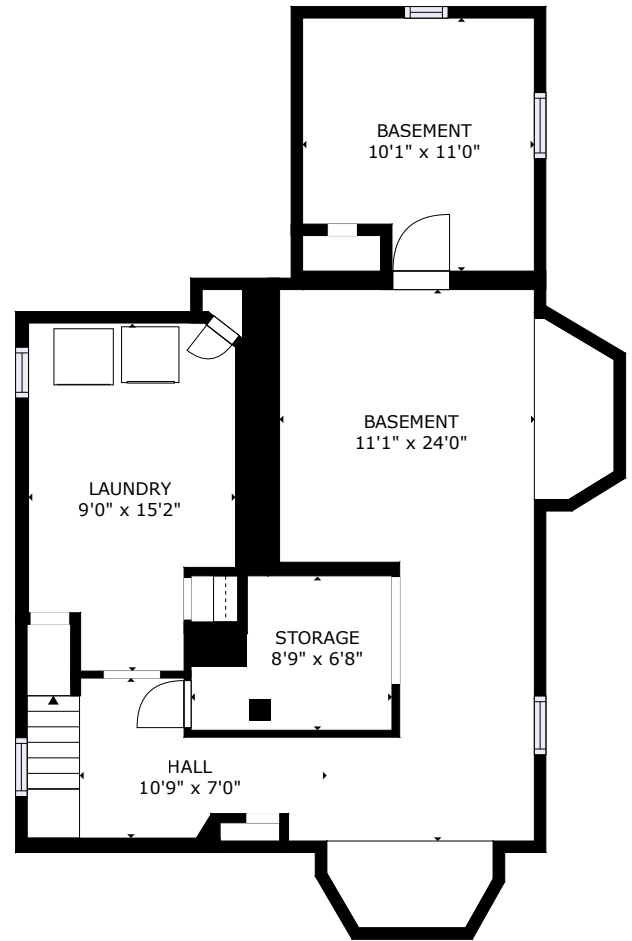
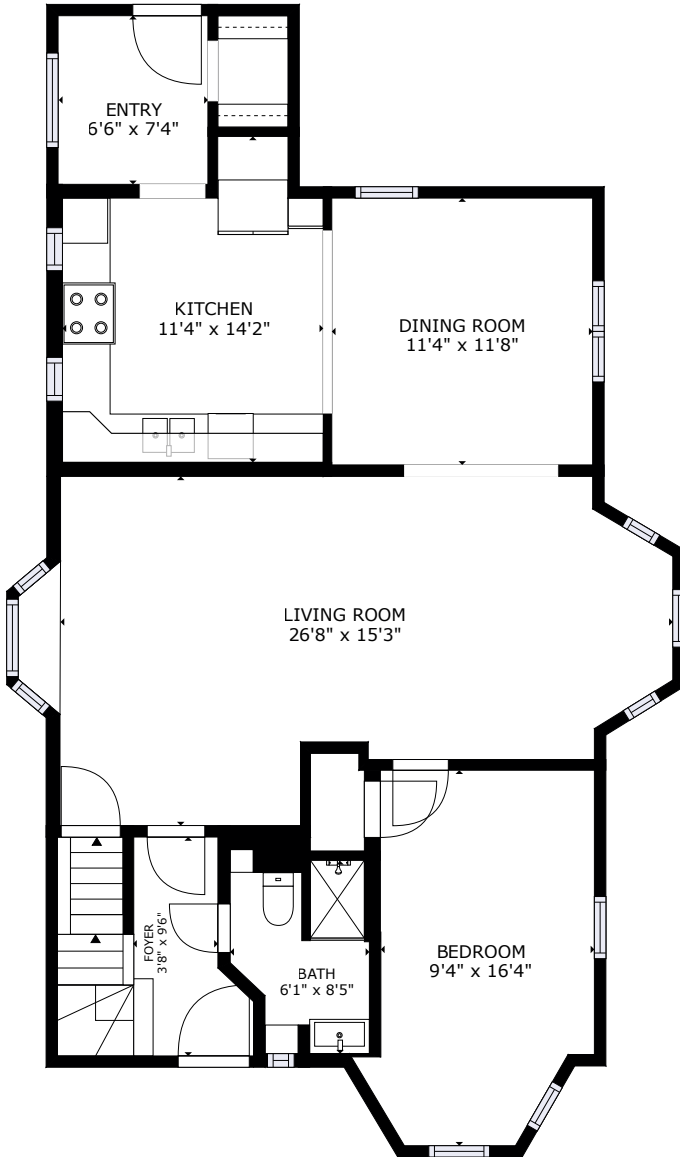


124 Smith St - Riverside, RI

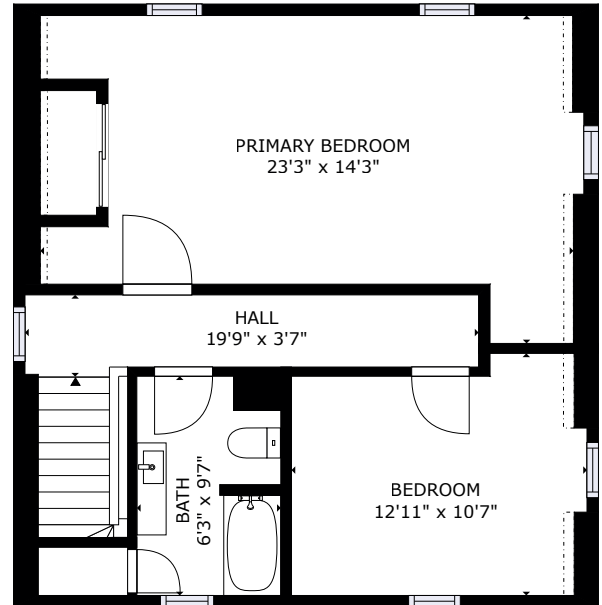
LOWER LEVEL



MAIN LEVEL



UPPER LEVEL



GROSS INTERNAL AREA
FLOOR 1: 686 sq. ft, FLOOR 2: 1011 sq. ft
FLOOR 3: 584 sq. ft, EXCLUDED AREAS:
REDUCED HEADROOM BELOW 1.5M: 11 sq. ft
TOTAL: 2281 sq. ft

SIZES AND DIMENSIONS ARE APPROXIMATE, ACTUAL MAY VARY.

This floor plan is an approximation, and is intended for marketing purposes only. This information has been provided with the sellers permission. © 2024 Glasshouse Media Inc.